

The Connecticut Society of Portrait Artists

👉 **Wants You!** 👈

To write about the Connecticut Society of Portrait Artists is really to write about you! Our mission is to bring your craft to the public through education, and to offer educational opportunities, comraderie and support to classical portrait artists.

Each year, the Society mounts at least one major national juried exhibition open to all portrait artists, as well as organizing conferences, workshops, and monthly opportunities to share in the business of the organization. We are a community of fellowship and nonjudgmental support. Following each business meeting, member artists may enjoy the trained eyes and valuable insights of their fellow members during our critique segment. The Society provides "a village" for those engaged in a solitary craft, and the benefits derived from sharing the love of portraiture with each other and our communities are so extensive that members travel from all parts of Connecticut (and beyond) to participate. Our membership is growing rapidly, and the extremely active involvement of some of America's most prestigious portrait artists on our Board of Advisors and as faculty for our events is testimony to the value and quality we achieve in fulfilling our mission.

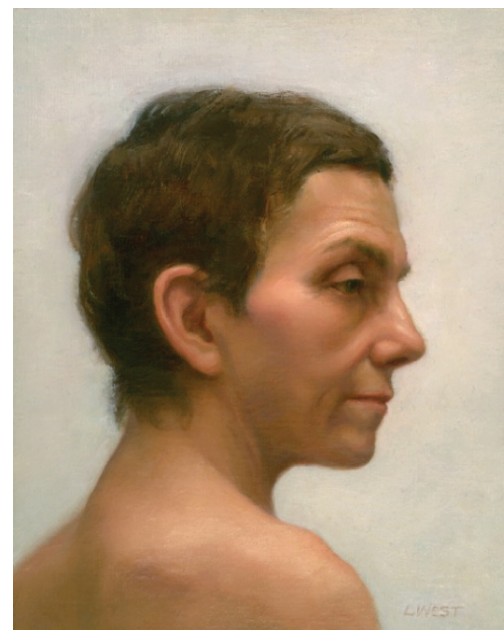
Sound like something you've been hoping to find? Find out how you can become involved. We would love to have you join us!

Already a member and want to step it up a bit?

Contact Joel Spector

joel@joelspector.com

Artists' Prospectus



Faces of Winter 2012 ***A Daniel Greene Festival***

Fine Art Juried Portrait Exhibition and Symposium

presented by

The Connecticut Society of Portrait Artists

UConn STAMFORD 1 University Place, Stamford, CT

EXHIBIT January 30 to February 24, 2012

VALENTINE RECEPTION February 3 from 6pm to 8pm

EVENT CO-CHAIRS Patricia Boes

pastelist@memoriesinpastel.com

Joel Spector

joel@joelspector.com

www.csopa.org

Image Above : Florence by Linda West : FW '10 First Place Winner

FACES OF WINTER 2012 ~ A DANIEL GREENE FESTIVAL
Fine Art Juried Portrait Exhibition and Symposium

FRIDAY FEBRUARY 3

PSOA FINALISTS PAINT OFF: 4:30 - 6:00 pm /
Jesus Villarreale, William Nathans, Joel Spector

VALENTINE RECEPTION: 6 pm /
Awards: Steven Assael, Juror
50/50 Paint-Off Silent Auction

SATURDAY FEBRUARY 4 / 9am - 6pm Registration required

AT THE PODIUM / John Howard Sanden, Wende Caporale
REALISM'S REVIVAL NATIONWIDE /
Peter Trippi, Fine Art Connoisseur

WHERE TO BEGIN, DESIGN AND COMPOSITION / Mary Minifie
BRINGING IT HOME: FINISHING A PORTRAIT /
Laurel Stern Boeck

THE IMPORTANCE OF DRAWING IN PORTRAITURE /
Igor Babailov

LIVE DEMO PORTRAIT PAINTING IN OILS / Daniel Greene

LESSONS FROM DANIEL GREENE'S WORK /
Robert Alexander Anderson

SUNDAY FEBRUARY 5 / 9:30am-5:15pm Registration required

AT THE PODIUM / John Howard Sanden, Wende Caporale

PASTEL DEMONSTRATION / Igor Babailov

ORIGINS OF INSPIRATION / Samuel Adoquei

PORTFOLIO REVIEW & GALLERY CRITIQUES / Faculty

MY 60 YEARS OF PAINTING / Daniel Greene

DANIEL GREENE HISTORIC & MODERN CONTEXT /
John Howard Sanden

LIFETIME ACHIEVEMENT AWARD TO DANIEL GREENE /
Faculty & Guests

Email JPEG Image(s) Email JPEGs of image(s) to CSOPAEentry@gmail.com. JPEGs must be received by December 20. Images must be emailed and in digital jpeg format only, with resolution of at least 300 dpi. Please make all JPEGs proportional to the original's dimensions. Name each image attachment "YourLastName/PortraitTitle." Subject line should read "FW12-YourLastName." Please include the information below in the body of the email:

- o Artist name
- o Artist contact information (email, home telephone, cell phone and address)
- o Artist website (Optional)
- o For each image: full title, width, height, medium, date completed and price. If not for sale please indicate "NFS" and price for similar (required for insurance purposes).

Your effort to follow the electronic submissions specifications ensures the most advantageous representation of your work and allows CSOPA to make quality selections. Have questions regarding digital submissions? Email CSOPAEentry@gmail.com or call Michel Delafontaine at (914) 319-4059 for technical help. Submission does not guarantee selection by CSOPA for the exhibit. Substitutions and late entries will not be accepted.

Notification A list of accepted works will be posted on the FW12 webpage on www.csopa.org by January 6, 2012. Selected artists will also be notified by email.

Receiving for Selected Artists Friday, January 27, 1pm to 5pm and Saturday January 28, 9-11am, at the UConn Stamford Gallery, One University Place, Stamford, CT. Artwork must be delivered, unpacked and ready for hanging or display. Portfolios (9 x 12 only) may be delivered at receiving for displaying the duration of exhibit.

Removal All art MUST be picked up on Saturday, February 25, between 1pm and 5pm. Works not removed at this time will be charged \$20/day storage fee and stored at the artist's own risk. Neither CSOPA nor The University of Connecticut will be held responsible for loss or damage to artwork or portfolios from time of delivery until pickup.

Valentine Reception and Awards Friday, February 3, 6pm to 8pm in the UConn Gallery and Rich Concourse. Wear something red!

FW12 IMPORTANT DATES AT-A-GLANCE

December 15	Submission Deadline
Nov 21	Early Submissions
January 6	Notification of selected works
January 27	Receiving of selected works 1-5 pm
January 28	9-11am
January 28	Judging for awards 11 am
February 3	Paint-Off 4:30-6pm
	Awards Reception & Auction 6-7pm
February 4 & 5	FW12 Symposium - A Daniel Greene Festival
February 25	Saturday Pick up 1-5 pm

Open Call for Portraits All portrait artists able to deliver or make shipping arrangements for delivery and pick-up of selected entries to The UConn Stamford Gallery during specified dates and times may submit. CSOPA membership is not required to enter.

Juror Acclaimed portrait artist Steven Assael will be judging for cash and ribbon awards. www.stevenassael.com

Works Eligible Original portrait paintings, drawings and sculptures not previously exhibited with CSOPA and completed within the past three years are eligible. No giclee, canvas transfers, photography or computer images. Paintings must be framed and wired for hanging with size limit 48" maximum horizontally, including frame. Gallery wrap will be accepted at the discretion of the curator. No easels. Sculpture limited to 75 lbs and pedestals must be provided. Artwork must be available for the duration of the exhibition (Jan 30 through Feb 24).

Submission Deadline and Procedure To be selected for Faces of Winter 2012, artists must submit entry forms, images and payment by December 15, 2011. Early submission thru Nov 21.

Entry Form, Check and Labels Complete Faces of Winter 2012 Artist's Submission Form and mail with check (made payable to CSOPA) to: CSOPA c/o Frances Philibert, 56 White Oak Drive, Prospect, CT 06712, or complete form and payment online (www.csopa.org). Entry form and payment must be postmarked/mailed by midnight December 15, 2011. Submissions without completed entry form and payment will not be considered. Do not mail photographs, slides, CDs or DVDs of images, follow the instructions below to email JPEGs of image(s).

CSOPA Faces of Winter 2012 Artist's Submission Form

Please complete this form, clip and mail to:

CSOPA c/o Frances Philibert, 56 White Oak Drive, Prospect, CT 06712

Artist's Full Name (all contact information fields required)

Street Address; Town, State, Zip

Phone _____ Email _____

First FW12 Exhibition Entry CSOPA Member* @ \$25 \$ _____

First FW12 Exhibition Entry CSOPA NonMember @ \$40 \$ _____

All Additional Submissions (max 4 entries total) @ \$10 each \$ _____

Faces of Winter 2012 Symposium - A Daniel Greene Festival Saturday Feb 4 and Sunday Feb 5 (Choose 1 below)

CSOPA Member* @ \$200 \$ _____ NonMember @ \$225 \$ _____

*Active CSOPA Membership is required for member rates.

Register/Renew/Check Status Link: <http://www.csopa.camp8.org>.

or Join/Renew your CSOPA membership now @ \$40 \$ _____

Donation: I wish to donate to this show in the amount of \$ _____

My name may be listed as a CSOPA Patron Yes ☐ No ☐

CSOPA is a 501 (c) 3 nonProfit Arts Education organization. For information regarding additional sponsorship and advertising opportunities go to csocietyopa@aol.com or call 203-845-9031.

Total Amount Enclosed for Competition & Symposium \$ _____

Make check payable to "CSOPA"

Liability

CSOPA, The University of Connecticut and their agents cannot be held responsible for loss or damage to artwork or portfolios however caused. Your entry to this exhibition constitutes your agreement with these terms and conditions. I hereby agree to the liability clause and to abide by the rules of this prospectus for the CSOPA Faces of Spring 2009 Exhibit.

Artist's Signature _____ Date _____

Optional Release: I hereby give CSOPA or its assigns permission to use my submitted artwork and my name for promotional purposes and to post my artwork on the CSOPA website.

Artist's Signature _____ Date _____

How did you hear about FW '12? _____

Cash prizes for First, Second and Third place artwork. Ribbons for Honorable Mention and Certificates of Merit awarded at the Juror's discretion.

Commissions Art for sale is encouraged. The artist will collect payment plus 6.35% sales tax and then forward a check for the 30% of the pre-tax sale price made to the University of Connecticut. A voluntary 10% donation to CSOPA for commissions resulting from the exhibit is greatly appreciated. Reports of sales will be requested.

FOR ACCEPTED WORKS

Artists are welcome to use any shipper that can adhere to the instructions below. Please notify CSOPA at csocietyopa@aol.com if you plan to do so.

Shipping Instructions Need a local shipper? CSOPA has made discounted arrangements with UPS for **A MAXIMUM OF 10** accepted artist or faculty works. All arrangements to take advantage of this offer are to be made by the artist and are at the artist's individual expense. You **MUST** inform CSOPA by email at csocietyopa@aol.com to reserve a slot or slots with this shipper. Please also inform us if you will be using this shipper to pick up your portrait at the end of the exhibit so we will know to whom we should release the painting.

UPS Wesport, CT, will accept FW12 shipments mailed to

CSOPA EXHIBIT, ATTN: MR. KRILIVSKY

UPS

1771 POST ROAD EAST

WESTPORT, CT 06880

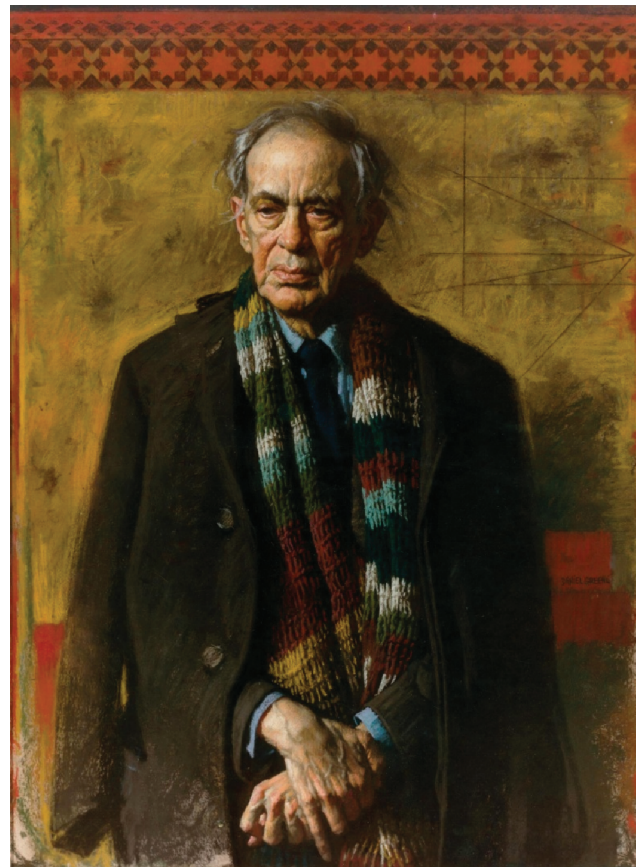
Your work must arrive between January 8 and January 25. The art will be held at UPS until exhibition receiving on January 27, then transported to the UCONN Campus Gallery and unpacked. After the exhibition, on Feb 24, Mr. Krilivsky will pick up the paintings, repack and ship each painting back to the respective artists. The cost of packing and shipping will be determined by the weight, dimensions, and destination of the items and will be charged directly to each artist's credit card. Artists must contact Mr. Krilivsky for details and to give him their credit card information. Artists purchase their own insurance through UPS at the time of shipment. Mr. Krilivsky has liability insurance for his transport duties to and from Stamford.

Artists should arrange shipment to UPS and for return by contacting Mr. Krilivsky at: 203-254-1675; FAX: 203-259-8054.

A DANIEL GREENE FESTIVAL

Symposium Lectures, Demonstrations

Saturday February 4, and Sunday February 5



CSOPA is honored to host an historic weekend with American icon, Daniel Greene. at the beautiful Gen Re Auditorium, University of Connecticut Stamford Campus. One dozen Master Portraitists and renowned special guests convene to celebrate and elaborate on the elements of extraordinary artistic success. Seating is limited! Register here or online to participate in this information- and inspiration-packed program. Schedule details, registration, updates and faculty information on www.csopa.org.